

GWT-4.0-480480-AWMN-01

Ver:10

TFT (Thin-Film-Transistor) Color Liquid Crystal Display Module

GW-	Global Wisdom Display
T	TFT Module
4.0	4.0" Diagonal
480480	480 RGB x 480 pixels
A-	Categories of models
W-	Amorphous silicon TFT's IPS/ Anti -Glare
M-	Transmissive/Normal Black
N-	Without TP
01	Detail Number
	RoHS Compliant

Global Wisdom Display Co., Ltd

www.globalwisdomdisplay.com www.gwdeshop.com

Business services: GWDsales@globalwisdomdisplay.com

Technical service: GWDtech@globalwisdomdisplay.com

Never stop production, stock for sale, support small quantity, full of wide products range

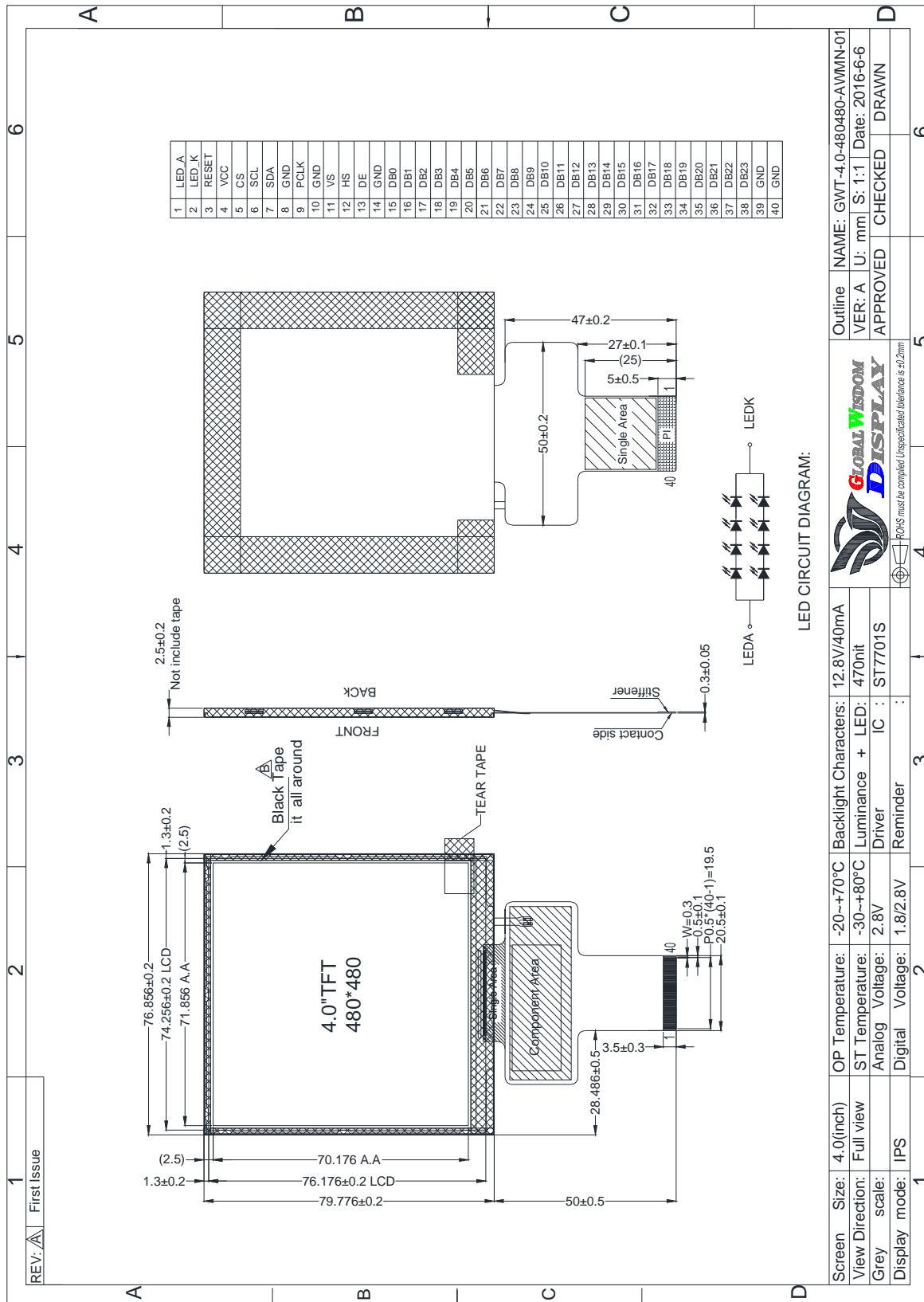
Revision History

Revision	Date	Originator	Detail	Remarks
10	2016.06.06	Mary.liu	Initial Release	

1. Module General Parameter

Features	Details	Unit
Screen Size (Diagonal)	4.0"	
Panel type	IPS	
Display Mode	Transmissive /Normally White	
Resolution	4800RGB x480	
View Direction (human Eye)	Full view	Best Image
Module Outline	76.856 (H) x 79.776 (V) x 2. 5 (T)	mm
Active Area	71.856(H) x70.176(V)	mm
Dot Size	0.1497 (H) x 0.1462 (V)	mm
Pixel Arrangement	-Strip	
Polarizer Surface Treatment	Glare	
Interface	24bit RGB interface	
Driver IC	ST7701S	-
With or Without Touch Panel	Without	
Operating Temperature	-20~70	°C
Storage Temperature	-30~80	°C
Weight	TBD	g
Recommend connector	-	

2. Outline Drawing



REV: A	First Issue	1	2	3	4	5	6
Screen Size:	4.0(inch)	OP Temperature:	-20--+70°C	Backlight Characters:	12.8V/40mA	Outline NAME:	GWT-4.0-480480-AWMN-01
View Direction:	Full view	ST Temperature:	-30--+80°C	Luminance + LED:	470nit	VER: A	U: mm S: 1:1 Date: 2016-6-6
Grey scale:	IPS	Analog Voltage:	2.8V	Driver IC:	ST7701S	APPROVED	CHECKED DRAWN
Display mode:	IPS	Digital Voltage:	1.8/2.8V	Reminder			
<p>PCBS must be completed (unspecified) tolerance is ±0.2mm</p>							