

# **GWT-5.0-800480-ATMN-01**

## **Ver:10**

**TFT (Thin-Film-Transistor) Color Liquid Crystal Display Module**

<b>GW-</b>	<b>Global Wisdom Display</b>
<b>T</b>	<b>TFT Module</b>
<b>5.0</b>	<b>5.0" Diagonal</b>
<b>800480</b>	<b>800 RGB x 480 pixels</b>
<b>A-</b>	<b>Categories of models</b>
<b>T</b>	<b>Amorphous silicon TFT's TN/ Anti -Glare</b>
<b>M-</b>	<b>Transmissive/Normal White</b>
<b>N-</b>	<b>Without TP</b>
<b>01</b>	<b>Detail Number</b>
	<b>RoHS Compliant</b>

**Global Wisdom Display Co., Ltd**

[www.globalwisdomdisplay.com](http://www.globalwisdomdisplay.com) [www.gwdeshop.com](http://www.gwdeshop.com)

Business services: [GWDsales@globalwisdomdisplay.com](mailto:GWDsales@globalwisdomdisplay.com)

Technical service: [GWDtech@globalwisdomdisplay.com](mailto:GWDtech@globalwisdomdisplay.com)

*Never stop production, stock for sale, support small quantity, full of wide products range*

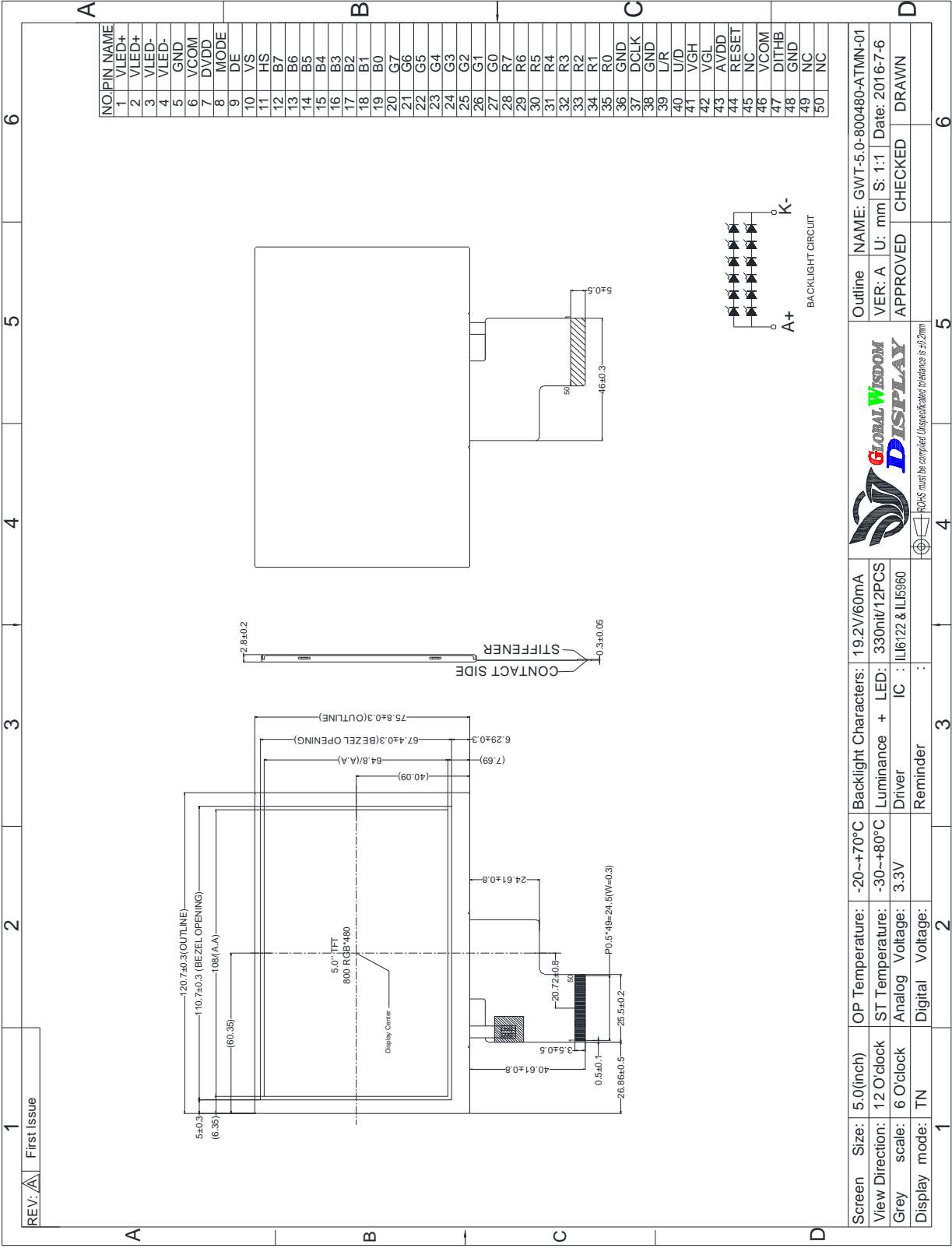
## Revision History

Revision	Date	Originator	Detail	Remarks
10	2016.07.06	Mary.liu	Initial Release	

## 1. Module General Parameter

Features	Details	Unit
Screen Size (Diagonal)	5.0"	
Panel type	TN	
Display Mode	Transmissive /Normally White	
Resolution	800RGB x 480	
View Direction ( human Eye )	12 O'clock	Best Image
Module Outline	120.7 (H) x 75.8 (V) x 2.8(T)	mm
Active Area	108(H) x 64.8(V)	mm
Dot Size	0.135 (H) x 0.135 (V)	mm
Pixel Arrangement	-Strip	
Polarizer Surface Treatment	Anti-Glare	
Interface	24 BIT parallel RGB interface	
Driver IC	ILI6122 & ILI5960	-
With or Without Touch Panel	Without	
Operating Temperature	-20~70	°C
Storage Temperature	-30~80	°C
Weight	TBD	g
Recommend connector	-	

2. Outline Drawing



Screen Size: 5.0 (inch)	OP Temperature: -20~+70°C	Backlight Characters: 19.2V/60mA	Outline NAME: GWT-5.0-800480-ATMN-01
View Direction: 12 O'clock	ST Temperature: -30~+80°C	Luminance + LED: 330nit/12PCS	VER: A U: mm S: 1:1 Date: 2016-7-6
Grey scale: 6 O'clock	Analog Voltage: 3.3V	Driver IC: ILI6122 & ILI5960	APPROVED
Display mode: TN	Digital Voltage:	Reminder:	CHECKED
			DRAWN