

# GWE-1.46-128128ATMN-01 Ver:10

## Graphic Color PMOLED Display

|        |                         |
|--------|-------------------------|
| GW-    | Global Wisdom Display   |
| E      | OLED Module             |
| 1.46   | 1.46" Diagonal          |
| 096096 | 128 x 128 DOT           |
| A-     | Categories of models    |
| T      | Color OLED's<br>Graphic |
| M-     | Full Color              |
| N-     | Without TP              |
| 01     | Detail Number           |
|        | RoHS Compliant          |

Global Wisdom Display Co., Ltd

[www.globalwisdomdisplay.com](http://www.globalwisdomdisplay.com) [www.gwdeshop.com](http://www.gwdeshop.com)

Business services: [GWDsales@globalwisdomdisplay.com](mailto:GWDsales@globalwisdomdisplay.com)

Technical service: [GWDtech@globalwisdomdisplay.com](mailto:GWDtech@globalwisdomdisplay.com)

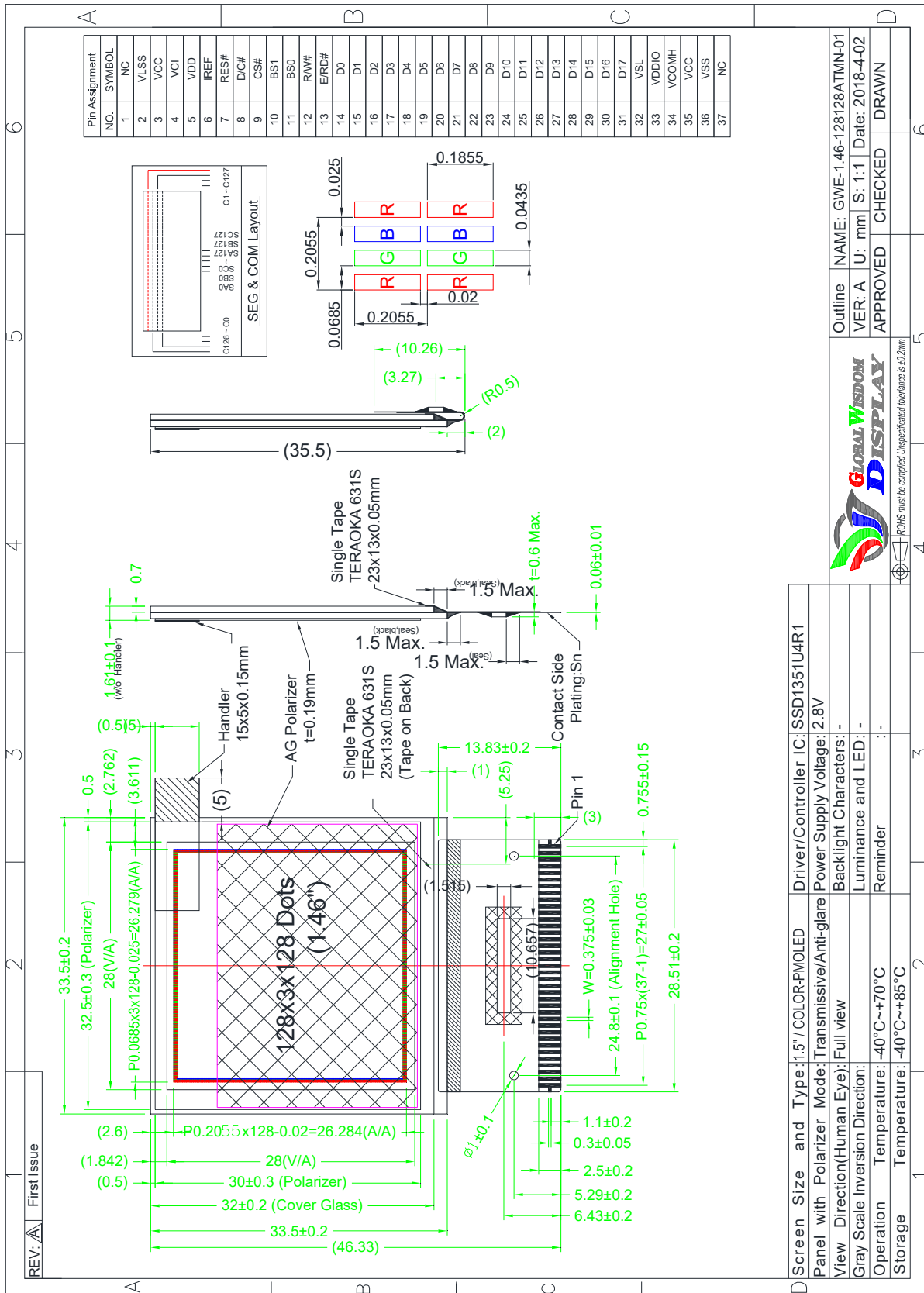
## Revision History

| Revision | Date       | Originator | Detail          | Remarks |
|----------|------------|------------|-----------------|---------|
| 10       | 2018.04.02 | Mary.liu   | Initial Release |         |
|          |            |            |                 |         |
|          |            |            |                 |         |
|          |            |            |                 |         |
|          |            |            |                 |         |
|          |            |            |                 |         |
|          |            |            |                 |         |
|          |            |            |                 |         |
|          |            |            |                 |         |
|          |            |            |                 |         |

## 1. Module General Parameter

| Features                    | Details   | Unit       |
|-----------------------------|---|------------|
| Screen Size (Diagonal)      | 1.46"   |            |
| Panel type                  | PMOLED  |            |
| Display Color               | Full  |            |
| Resolution                  | 128 x128 Dots   | Pixels     |
| View Direction (human Eye)  | Full view   | Best Image |
| Module Outline              | 33.5 (H) x 33.51 (V) x 1.61 (T) (Note1 )  | mm         |
| Active Area                 | 26.279(H) x 26.284(V)   | mm         |
| Dot Size                    | 205 (H) x 205 (V)   | um         |
| Pixel Arrangement           | -   |            |
| Polarizer Surface Treatment | Anti-Glare  |            |
| Interface                   | 8/16/18-bit 6800-series Parallel Interface<br>8/16/18-bit 8080-series Parallel Interface<br>Serial Peripheral Interface |            |
| Driver IC                   | SSD1351   | -          |
| With or Without Touch Panel | Without   |            |
| Operating Temperature       | -40~70  | °C         |
| Storage Temperature         | -40~85  | °C         |
| Weight                      | TBD   | g          |
| Recommend connector         | -   |            |

## 2. Outline Drawing



|                                      |        |          |         |                 |
|--------------------------------------|--------|----------|---------|-----------------|
| Outline NAME: GWE-1.46-128128ATMN-01 | VER: A | U: mm    | S: 1:1  | Date: 2018-4-02 |
|                                      |        | APPROVED | CHECKED | DRAWN           |
|                                      |        |          |         |                 |

|  |                                   |
|--|-----------------------------------|
| Screen Size and Type: 1.5"/COLOR-PMOLED            | Driver/Controller IC: SSD1351U4R1 |
| Panel with Polarizer Mode: Transmissive/Anti-glare | Power Supply Voltage: 2.8V        |
| View Direction(Human Eye): Full view               | Backlight Characters: -           |
| Gray Scale Inversion Direction: -                  | Luminance and LED: -              |
| Operation Temperature: -40°C~+70°C                 | Reminder: -                       |
| Storage Temperature: -40°C~+85°C                   |                                   |