

GWE-0.96-064128ADWN-01

Ver:10

Graphic Mono PMOLED Display

GW-	Global Wisdom Display
E	OLED Module
0.96	0.96" Diagonal
064128	64 x 128 DOT
A-	Categories of models
D	Mono PMOLED 's Graphic
W-	white Color
N-	Without TP
01	Detail Number
	RoHS Compliant

Global Wisdom Display Co., Ltd

www.globalwisdomdisplay.com www.gwdeshop.com

Business services: GWDsales@globalwisdomdisplay.com

Technical service: GWDtech@globalwisdomdisplay.com

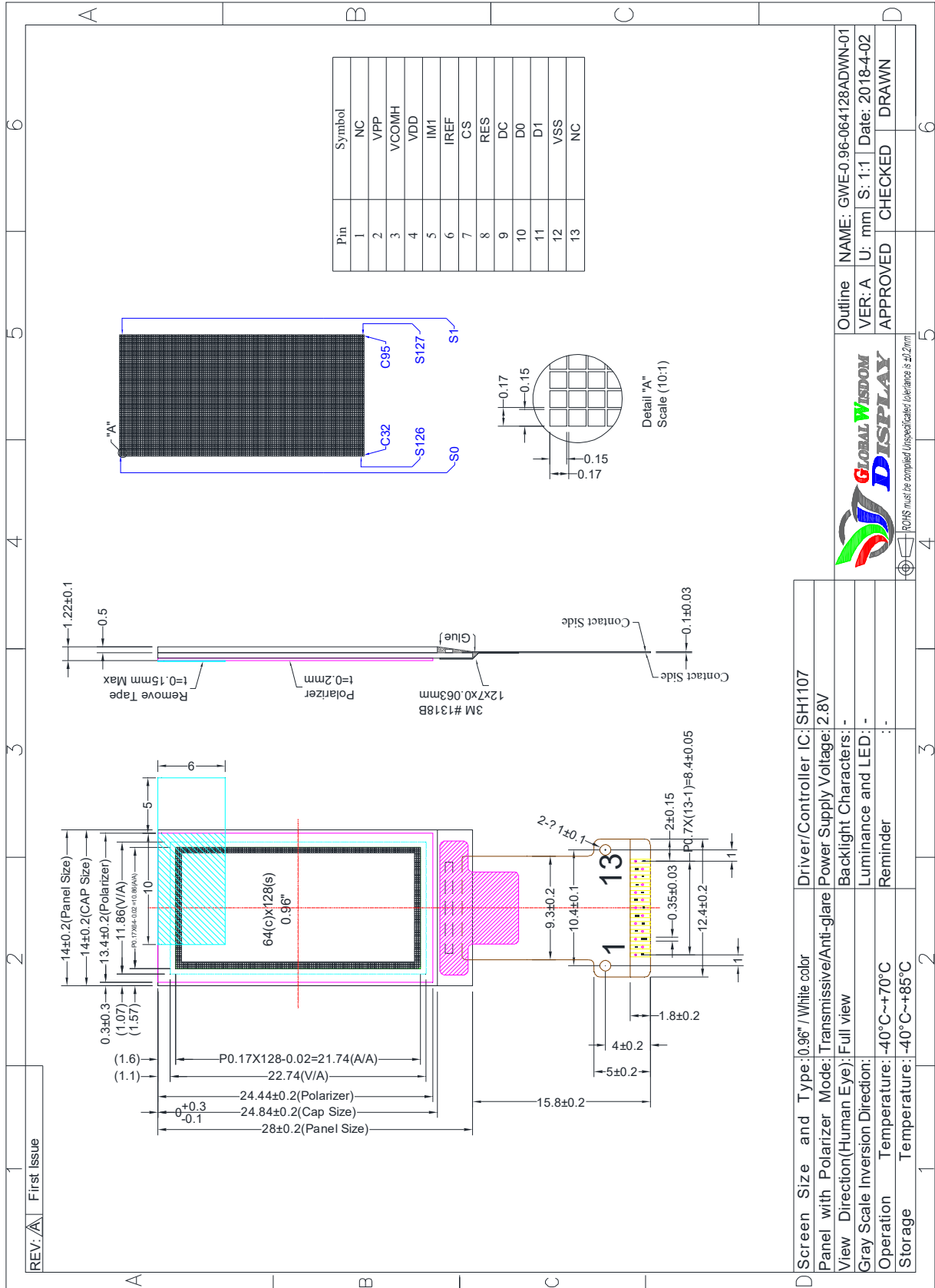
Revision History

Revision	Date	Originator	Detail	Remarks
10	2018.04.02	Mary.liu	Initial Release	

1. Module General Parameter

Features	Details	Unit
Screen Size (Diagonal)	0.96"	
Panel type	PMOLED	
Display Color	white	
Resolution	64 x128 Dots	Pixels
View Direction (human Eye)	Full view	Best Image
Module Outline	14 (H) x 28 (V) x 1.22 (T)	mm
Active Area	10.86(H) x 21.74(V)	mm
Dot Size	170(H) x 170(V)	um
Pixel Arrangement	-	
Polarizer Surface Treatment	Anti-Glare	
Interface	4-wire SPI IIC	
Driver IC	SH1107	-
With or Without Touch Panel	Without	
Operating Temperature	-40~70	°C
Storage Temperature	-40~85	°C
Weight	TBD	g
Recommend connector	-	

2. Outline Drawing



ROHS must be complied Unspecified tolerance is ±0.2mm